

Every kilo counts



NÆSTVED

10 types of waste

Tips for the new sorting programme



See how you need to sort your waste





FOOD WASTE



RESIDUAL WASTE



PAPER &
CARDBOARD



GLASS



METAL



PLASTIC



FOOD &
BEVERAGE



HAZARDOUS
WASTE



TEXTILES



BULKY WASTE

CONTENTS

page 3	New green options
page 4	Every kilo counts
page 12	How to sort your waste Sorting guide
Page 13	Food waste
Page 14	Residual waste
Page 15	Paper and small cardboard items
Page 16	Glass
Page 17	Local recycling
Page 18	Metal
Page 19	Plastic
Page 20	Food and beverage cartons
Page 21	Get more space in your refuse bin
Page 22	Bulky waste
Page 23	Large cardboard items
Page 24	Hazardous waste
Page 25	Your environment box
Page 26	Textiles
Page 27	New bags for ruined textiles
Page 28	Garden waste
Page 29	ABC of Waste
Page 30	Questions and answers



Sammen ta'r vi skraldet
og gi'r det videre



New green options

Waste is not just waste. It is a resource we all need. Every time we buy a litre of milk in the supermarket, cook food at home or shop on the internet, we contribute to the impact on nature and the environment based on the way in which we handle the waste product. Where the waste ends up and in which refuse bin has enormous influence on the outside world and our future. Everything is connected and if we don't take care of the valuable resources that are in the waste, they will disappear.

Last summer, a majority in the Danish parliament adopted a new climate plan which, among other things, involves that we all have to sort more waste - and into the same ten types of waste in all the municipalities in the country. If we face the music together and make sure that the environment and our future generations have the best conditions is an opportunity we cannot waste. We are obligated to be at the forefront when it comes to the development of better and greener solutions regardless of whether it's about waste, the climate, construction or transport. Therefore, the Town Council has agreed that the new waste sorting scheme will be introduced within the presented deadline, which is 1 July 2021. We can and will be part of the green development and, consequently, we must also do it now.

When you join in to take the first step and be a part of a new development, you are also prepared for things to change along the way. We constantly learn from the experiences we have and should challenges appear on the way, then we'll handle those as well. I can already see how motivated the citizens in the municipality are in relation to sorting and, therefore, I am also certain that we will reach our goal with the new waste sorting scheme. Together we can make a difference and I look forward to making a good start.

Helle Jessen

Chairperson for Technical Committee
Næstved Municipality



Every kilo counts

Even though it perhaps does not look like it, your waste, however, is full of valuable resources. Many materials can actually be used again and the more you sort your waste, the more resources we can save. Every kilo counts and even though no one can do everything, you can certainly make a difference with your waste.

Here in the Sorting Guide, you can find information about the process for waste; from the dustbin to new materials and learn more about how your waste can be given new life - just by being placed in the correct section in the waste container.

New classification for your waste and a new container

To be able to sort even more waste, you will receive a new container and a red hazardous waste box. You must keep your old recycling container, but the new will have pictograms on it so the types of waste match the coming scheme. There will also be pictograms on the inside of the container lid.

Introducing a new waste sorting scheme is a huge task. Among other things, we must deliver almost 25,000 new recycling containers and red hazardous waste boxes throughout the entire municipality. Therefore, we have already begun the task. On the next page you can read more about **when the new container may be used as well as what you need to do** until the new scheme begins.

Your new recycling container is slightly different than the other containers at your address. The lid is a so-called flip-lid which, among other things, helps to improve the refuse collectors' job. Unlike the old lids, the flip-lid opens itself when the container is emptied onto the refuse lorry.



When may the new recycling container be used?

Even though it is both new and exciting with the new waste sorting scheme, unfortunately you will have to wait a little before you can begin using it. **The waste sorting scheme will begin on 1 July 2021 and until then, you must continue using the current scheme.**

This means that you must use your old recycling container - even though it has been given new pictograms. Your **glass, metal and hard plastic** must still be placed in the one section and **paper and small cardboard items** in the other. Once the new scheme commences, you must use both the old and the new recycling containers for the new sorting.

Your current scheme with food and residual waste will continue as usual but from **1 July 2021**, your recycling waste must be sorted as follows:

Recycling container 1:

Plastic/food and beverage cartons must be placed together in the one section and paper/small cardboard items in the other section.



NB: There is no change to the paper/small cardboard items scheme.

Recycling container 2:

Metal must be placed in the one section, and glass in the other.



How often will the recycling containers be emptied?

There are two different periods for emptying recycling containers. The first recycling container with plastic/food and beverage cartons as well as paper will be emptied every 14 days while the other recycling container with metal and glass will be emptied every 8 weeks. You can see all the new collection days from 1 July 2021 at www.naestved-affald.dk under 'Min side' (My page).

If you need extra space for your recycling waste, you can purchase an extra recycling container with either one or two sections. You can also deliver your excess waste to the recycling station or to one of the municipality's public recycling islands. You can read more about the options at www.naestved-affald.dk

Space for the containers outside

So that the refuse collector can pick up your containers, there are some requirements regarding your access route and the area where your containers are located. When one recycling container becomes two, it may create a few challenges in your driveway or in the area where your containers stand.

The requirements for access route and area not changed in connection with the new waste collection scheme, but if you are in doubt about whether your access route or container area is correct, you can read more about the rules on the next page.

Rules for container area and access route

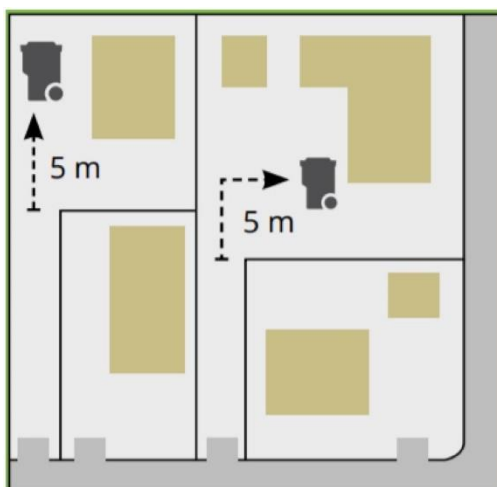
1. The clearance height everywhere on the access route and by the containers must be minimum 2.2 metres.
2. The area around the containers must be illuminated in the dark winter months.
3. The containers may stand maximum 20 metres from the property boundary.
4. Your garden gate or driveway gate must be able to stand open by itself.
5. The access route must not have any steps. If it is below 5 metres then it decreases or increases by 14.3 cm per metre at the most. If it is above 5 metres then it decreases or increases by 10 cm per metre at the most.
6. The access route must be so wide that the refuse collector can drive with the container without problems.
7. The access route may not be blocked by a car, pram or bicycles.
8. The containers must stand with the handles facing outwards so the refuse collector can take the containers without having to turn them. The containers must stand with a minimum distance of 10 cm between them.
9. The base on the access route and container area must be firm, e.g. tiles, concrete or asphalt, making it possible for the waste collector to move the containers without difficulty.
10. If you have a dog, this must be indoors or on a leash when the refuse collector is to pick up your waste.

Long driveway

If you have a long driveway, the refuse lorry will only drive onto your property if the driveway is suitable for use by refuse lorries. The long driveway must have a width and clearance height so the refuse lorry can enter and turn in the driveway or yard. Remember to also salt, grit or clear snow when necessary.

Is your home on an L-shaped site?

There must be 5 metres at the most from the container to the place where the corner of the L-shape transverses into the property itself.



Your containers will be labelled with your address

When we deliver the new recycling containers at your address, your old recycling containers will have new stickers applied for the new sorting scheme. In addition, an address label will be applied on all three containers which are coded together with a chip in the container.

The address labels show to which address the containers belong and, therefore, the labels may not be removed. In relation to the earlier white labels, which were just temporary, the new address labels are intended to remain on the containers for many years to come.

How clean does the waste have to be?

How clean does the used mackerel tin have to be? Does the plastic tub with cream cheese have to be rinsed completely clean? And how much jam is allowed to remain in the jar before you throw it into the refuse bin?

Plastic, metal, glass as well as food and beverage containers must be emptied as much as possible but you do not need to use water to clean it.

If there are food remnants in half-filled bottles, cartons and tubs, they must be scraped clean and not drip. Only use water when you think it is necessary. For example, you can reuse your dishwashing water or water you used to boil potatoes.

For food and beverage cartons like yoghurt and milk especially, it is a good idea to turn the carton upside down so remnants can trickle out before you throw the cartons into the recycling container.



Why do we have to sort more waste?

Last summer, a majority in the Danish parliament adopted a new climate plan. A part of this plan is that all the municipalities in the country must sort into the same 10 types of waste so even more waste can be moved on for recycling. In Næstved Municipality we sort using the current 7 types of waste sorting scheme.

By recycling more waste, it is possible to utilise the valuable resources and materials that are in the waste and reduce the amount of waste for incineration.

The new waste sorting scheme will become effective on 1 July 2021.

If you live in an apartment building with a communal solution

Apartment buildings have a communal solution for waste in either containers or underground containers. These are located in one or more places by the building and the residents must bring their waste to the communal solutions.

Depending on the number of housing units, the area and choice of solution, the number of containers and underground containers vary.

The container with metal, glass and hard plastic will be changed. Therefore, you must no longer mix these types of waste. Plastic - both hard and soft - must instead be mixed together with food and beverage containers and your glass and metal must be collected in each their container. Paper and small cardboard items, food waste and residual waste will continue as usual.

If your address is registered for the bulky waste scheme, you have the option of using a red hazardous waste box for hazardous waste. The same applies to ruined textiles which can also be delivered through bulky waste. If your address is not registered for the bulky waste scheme, in cooperation with the housing association, another scheme for collection of hazardous waste will be established. You will receive more information about this once the scheme is in place.

NB: There may be an overlap between the current waste sorting scheme and the new scheme. Therefore, you must wait to sort your waste in the new way until the containers or the underground solutions at your address have been given new pictograms.



If you live in a terraced house area with a communal solution

There can be a huge difference between which waste collection solution a terraced house area has. While some properties have a communal solution just like apartment buildings, other properties have a communal collection of items for recycling (glass, metal, hard plastic, paper and small cardboard items) while food and residual waste is collected by each property in a container with two sections.

If you have a container for food and residual waste, this scheme will continue unchanged. The same applies to collecting food and residual waste in containers. The only type of waste that will change in the new scheme is recycling waste. The container with metal, glass and hard plastic will be changed. Therefore, you must no longer mix these types of waste. Plastic - both hard and soft - must instead be mixed together with food and beverage containers and your glass and metal must be collected in each their container. Paper and small cardboard, food waste and residual waste will continue as usual.

If your address is registered for the bulky waste scheme, you have the option of using a red hazardous waste box for hazardous waste. The same applies to ruined textiles which can also be delivered through bulky waste. On the other hand, if your address is not registered for the bulky waste scheme, in cooperation with the housing association or association for your communal solution, another scheme for collection of hazardous waste will be established. You will receive more information about this once the scheme is in place.

NB: There may be an overlap between the current waste sorting scheme and the new scheme. Therefore, you must wait to sort your waste in the new way until the containers or the underground solutions at your address have been given new pictograms.

If you own a summerhouse or live in a permanent residence in a summerhouse area

Your food and residual waste will be collected in the same way as with the current scheme. You must also continue bringing your recycling waste to one of the recycling islands in the summer house area.

The underground containers on the recycling island will be renovated so the containers can accommodate the new types of waste. You can read more about the renovation on the next page.

NB: There may be an overlap between the current waste sorting scheme and the new scheme. Therefore, you must wait to sort your waste in the new way until the underground solutions at your address have been given new pictograms.

As part of the new waste sorting scheme, a red hazardous waste box will be delivered to your address. The red hazardous waste box must be used for hazardous waste and can be swapped for a new and empty box through the bulky waste scheme. You also have the option of having ruined textiles collected as bulky waste. You can read more about both types of waste in this waste sorting guide.



Waste sorting solution with underground containers

We are currently busy renovating the underground containers. The renovation is being executed on those containers that contain recycling waste. The containers have a large sack underground in which the waste is collected and these can be divided so instead of one sack, there are two. In this way, more containers do not need to be put underground.

Only the underground containers for recycling waste (glass, metal, hard plastic, paper and small cardboard items) are being renovated as food and residual waste is not being changed in the current scheme.

The waste will not be mixed as each type of waste has each its chute with a lid and therefore will remain in the right sack underground. When the sack is full, the waste is collected by the refuse collector in a crane vehicle which empties one type of waste at a time.

Below you can see what the underground containers will look like after renovation.



◀ The waste is collected underground. The underground containers will be renovated so there will be two sacks instead of one. The sacks are separated by a partition so they remain in place and the waste is not mixed together.

The sacks are emptied by a refuse lorry with a crane which lifts the sacks up. At the bottom of the sack is a closing mechanism which opens and the waste then drops out into a container on the refuse lorry.

The waste is then transported onwards for processing. For example, your glass is transported to the Port of Næstved.

Only a small portion of the underground containers are above ground.

When the containers have been renovated, there will be two lids instead of one. One chute for each type of waste.

▶ The old pictograms on the side will be removed and new stickers will be applied on the edge and on the lid so you can see which type of waste has to go into which section.

The container for food and residual waste will not be renovated.



Fitting out your kitchen

Would you like to sort more waste but space is tight under the kitchen sink? Well, here is some inspiration for how you can fit out your kitchen, passage or scullery with smart solutions.



We may not make demands on what your layout should look like indoors. However, we can provide some inspiration so perhaps you can get a few good ideas for waste sorting solutions.

The pictures are borrowed from Sønderborg Forsyning, which already sorts into the new types of waste.

If you have a smart solution at home you would like to share, then send us an email with a photo to affald@naestved.dk



**How to
sort
your
waste**

FOOD WASTE

SORTING GUIDE



YES PLEASE TO

- Prepared and unprepared food
- Potato and carrot peel
- Vegetables and fruit
- Bones from meat
- Poultry and fish
- Egg shells and nut shells
- Cut flowers and flower bulbs
- Used paper towel
- Coffee filters and teabags

NO THANKS TO

- Garden waste
- Nappies
- Cat litter
- Packaging from foods - even though there are food remnants in it

NB: Food waste must be sorted in the same way as usual.

TIPS FOR SORTING

Nappies and packed cat litter must be put in residual waste. Sorted packaging, e.g. soft plastic must be placed in the container for plastic waste while glass bottles/jars must be placed in the container for glass.

Garden waste must be taken to the recycling station or be delivered with the garden waste scheme which is an additional scheme.

MAKE A KNOT IN THE BAG

Food waste must be placed in plastic bags. Make sure you do not overfill the bag - and make a knot in it at the top. Carefully throw out the bag so liquids and food remnants do not trickle out.

RESIDUAL WASTE

SORTING GUIDE



NEW
NO THANKS TO SOFT
PLASTIC AS WELL
AS FOOD AND
BEVERAGE CARTONS
IN RESIDUAL
WASTE



YES PLEASE TO

- Pizza boxes
- Packaging with food remnants
- Greasy and dirty paper and cardboard
- Nappies
- Vacuum cleaner bags
- Cat litter and dog poo bags
- Cotton buds
- Gift wrap
- Animal bedding from rabbits and guinea pigs, for example
- Ash and grilling charcoal (must be cooled and in closed bags)

NO THANKS TO

- Food waste
- Recyclable materials, e.g. glass, metal, plastic, cardboard or paper
- Hazardous waste
- Electronic articles and batteries
- **NEW:** Food and beverage cartons
- **NEW:** Soft plastic such as shopping bags, plastic wrap, etc.

TIPS FOR SORTING

Remember to pack your residual waste into bags and tie a knot in the top of the bag.

New: Soft and hard plastic must be placed in the container for plastic waste. Cartons from, e.g. milk and juice must be placed in the container for food and beverage cartons.

GIVE YOUR FOOD AND BEVERAGE CARTONS NEW LIFE

As part of the new waste sorting scheme, your food and beverage cartons must no longer be placed in the container for residual waste. They must instead be sorted so they can be reused for new

PAPER AND SMALL CARDBOARD ITEMS

SORTING GUIDE



YES PLEASE TO

- Newspapers
- Weekly magazines/magazines
- Letters
- Office paper
- Envelopes
- Printed advertisements
- Packaging cardboard (e.g. from the toothpaste box)
- Corrugated cardboard
- Boxes (cardboard and carton)

NO THANKS TO

- Milk and juice cartons
- Pizza boxes
- Plastic packaging from advertisements and magazines
- Large cardboard items (larger than an A4-size paper)
- Books

NB: Paper and small cardboard items must be sorted in the same way as usual.

TIPS FOR SORTING

Sorted cardboard and paper must be clean and dry - and not in bags.

If your cardboard is larger than an A4-size paper, we recommend that you use the bulky waste scheme or the recycling station.

Milk and juice cartons must be placed in the container for food and beverage cartons.

Pizza trays must be placed in residual waste as they are not pure cardboard due to food remnants, oil and grease.

Soft plastic must be placed in the container for plastic.

DID YOU KNOW THAT 1 KG OF NEWSPAPERS CAN BECOME 32 EGG TRAYS?

Paper and cardboard can be recycled into new products. For example, cardboard can become new packaging while old newspapers can become new paper.

GLASS

SORTING GUIDE



YES PLEASE TO

- Glass bottles
- Wine bottles
- Glass containers
- Jars for preserves
- Pickle jars
- Drinking glasses

NO THANKS TO

- Ceramics
- Porcelain
- Mirrors
- Window panes
- Stoneware (e.g. ovenproof dishes)

TIPS FOR SORTING

Sorted glass must not be put in bags. The glass/jar must be empty and scraped clean of food residue. Remember to remove the lid as that must go into the container for metal items.

Ceramic and porcelain items may not be placed in the container for glass as they contaminate the glass and can destroy the entire collected load in the refuse lorry. These types of waste must instead be delivered to bulky waste or to a recycling station.

USED PICKLE JARS SAVE ENERGY

Glass is made from very fine sand. It requires 7 times as much energy to melt sand into glass as it does to recycle glass.

At the same time, only a small amount of glass is wasted when it is recycled into new glass and, therefore, your used bottles and preserves jars can be used again and again.

LOCAL RECYCLING

When you place your empty glass bottles and used pickle jars in the container for glass, the glass is recycled locally. The glass is actually taken for sorting with the company, Reiling Glasrecycling, which is located in the Port of Næstved.

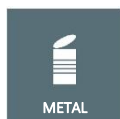
Once the glass is sorted, it is transported to the glassworks in Fensmark where Ardagh Glass Holmegaard melts the glass down and reuses it for new jars and bottles.

There is no limit to how many times glass can be recycled. If the glass is put in the correct container, it can be recycled again and again. You can see below the journey glass goes through from being waste to becoming new glass. The journey begins when you throw the glass into your container at home.



METAL

SORTING GUIDE



YES PLEASE TO

- Tins from preserves
- Beer and soft drink tins
- Aluminium foil trays
- Metal lids
- Bottle caps
- Tea light holders
- Pots and pans

NO THANKS TO

- Spray cans
- Pressure bottles (e.g. gas cartridges for grill and gas burners)

TIPS FOR SORTING

Sorted metal must not be put in bags. Metal cans and other metal that has contained food must be empty and scraped clean of food residue before being placed in the recycling container.

Large metal that cannot be placed in the container must go to bulky waste or to the recycling station.

Spray cans must be placed in the red hazardous waste box or at the recycling station as hazardous waste.

Pressure bottles must be placed in hazardous waste at the recycling station as these may not be placed in the red hazardous waste box.

DID YOU KNOW THAT ...

Your metal can be melted down and used again and again? Your used liver pâté trays can become a new bicycle, for example.

PLASTIC

NEW: SOFT AND HARD PLASTIC

SORTING GUIDE



YES PLEASE TO

- Packaging (e.g. trays from food, cold meats and fruit)
- Lids
- Cannisters
- Containers (e.g. washing powder and soap)
- Plastic bottles
- Tubs (e.g. from skyr, yoghurt or cream cheese)
- **NEW:** Soft plastic (e.g. plastic wrap from vegetables, shopping bags, bubble plastic, clear and coloured bags)

NO THANKS TO

- Polystyrene and PVC (e.g. rubber boots, raincoats and inflatable water toys)
- Construction waste (e.g. various pipes)
- Bags from animal feed with metal lining
- Hazardous waste

TIPS FOR SORTING

The plastic must be scraped clean of food residue before you place it in the waste container.

Remember to remove the lid off plastic containers, cannisters and tubs so they do not explode when the refuse collector empties the waste container.

To get better space in your container, you can collect your plastic waste in a bag and press the air out of the bag before placing it in the container.

You cannot recycle plastic packaging that is labelled with warning symbols. Always deliver this waste as hazardous waste in the red hazardous waste box - regardless of whether the packaging is empty or not.

PVC and construction waste must be taken to the recycling station. Bags from animal feed must be placed in residual waste.

Polystyrene must be sorted as bulky waste or taken to the recycling station.

NEW WASTE SORTING:

NO DISCRIMINATION - YES PLEASE TO BOTH SOFT AND HARD PLASTIC

Do you have difficulty knowing the difference between hard and soft plastic? Do not fear - it no longer needs to be sorted separately. With the new waste sorting scheme, all your plastic waste

FOOD AND BEVERAGE CARTONS

SORTING GUIDE



NEW SORTING OF
SOFT PLASTIC AS
WELL AS FOOD
AND BEVERAGE
CARTONS



YES PLEASE TO

- Milk cartons
- Juice cartons
- Yoghurt cartons
- Chocolate milk cartons
- To-Go mugs (e.g. from coffee)
- Cartons from skinned tomatoes
- Cartons from cooking cream and other milk products
- Soft drink cups (e.g. from fast food and take-away establishments)
- Cartons from sauces (e.g. cheese and bechemel sauce)

NO THANKS TO

- Pizza trays
- Paper packaging
- Plastic lids
- Hard plastic packaging
- Soft plastic packaging
- Drinking straws

TIPS FOR SORTING

Food and beverage cartons must be placed unpacked in the container. The cartons must be scraped clean of food residue before you place it in the waste container.

Remember to separate plastic lids and drinking straws from the food and beverage cartons before placing them in the container together with the plastic waste.

Cardboard can be placed in the container for paper and small cardboard items if the size is smaller than an A4-piece of paper. Large cardboard items must go to bulky waste or be taken to the recycling station.

DID YOU KNOW THAT ...

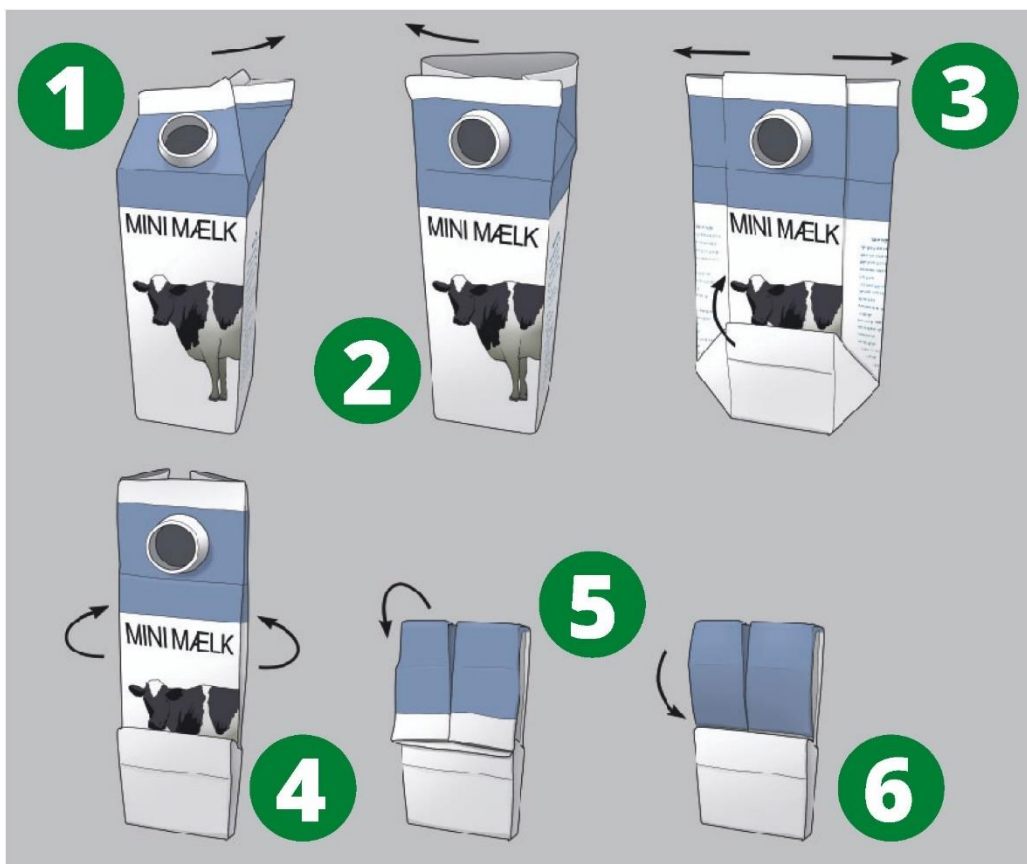
Your used milk cartons can become new materials? When food and beverage cartons are sent for recycling, the cartons are washed and the internal and external plastic foil is separated from the paper fibres.

The cartons actually consist of plastic, foil and paper where both the paper fibres and the plastic can be recycled. The paper fibres can be used for new paper products, for example.

GET MORE SPACE IN YOUR REFUSE BIN

Food and beverage cartons are one of the new types of waste that must be sorted. If the cartons are not folded together, they take up a lot of space in the container and it won't be long before there is no more space.

Fold your food and beverage cartons together and get more space in the container. Follow the six easy steps and make room for even more waste that can be recycled. Food and beverage cartons must be placed unpacked in the container and be scraped clean of food residue and liquids.



Bulky waste

Did you know that you can order collection of bulky waste every 14 days?

For example, you can have furniture, domestic appliances, large cardboard items, polystyrene, etc. collected. You just need to order collection at www.naestved-affald.dk and the refuse collector will come by your address on a specific day.

Every kilo counts - also your bulky waste

We try to recycle as much waste as possible - also from your bulky waste. This is why small combustibles or bags with mixed waste cannot be collected.

Much of the waste that is put out as bulky waste can easily be given a “new life”. We give things another chance so they can find a new home if the bulky waste is in such a condition that it can be passed on.

Not all large waste is bulky waste

Even though you can have many things collected as bulky waste, the scheme does not include everything. This is because wood is not just wood, for instance. It can be both treated with paint, be impregnated or be indoor wood which must be handled differently after collection.

When waste is to be recycled, it is important that the waste comes to the right place. Therefore, you may find that some types of waste are not collected for bulky waste but instead have to go to the recycling station.

BULKY WASTE

COLLECTED AFTER BEING ORDERED

SORTING GUIDE



In doubt
about the sorting?

Visit our Waste ABC at
www.naestved-affald.dk

YES PLEASE TO

- Large cardboard items (folded together, tied and manageable)
- Carpets (must be cut up into max. 1 x 1 metre pieces)
- Domestic appliances
- Electronic items
- Iron and metal
- Plastic
- Furniture
- Ceramics and porcelain
- Textiles
- Polystyrene
- Pallets

NO THANKS TO

- Hazardous waste
- Construction waste
- Sanitary ware
- Tyres and other car parts
- Bottles and jars
- Small and large combustibles (e.g. bags with mixed waste, ring binders, video tapes, parasols, etc.)
- Commercial waste
- Pianos
- Wood burning stoves
- Wood
- Big bags

NEW: You can have 12 units of bulky waste collected at a time. One unit corresponds to one piece of furniture, one bag or one bundle of cardboard, for example.

TIPS FOR SORTING

Bulky waste must be put out on the property boundary before 7 am on the collection day, it must be sorted into the different types of waste and must be placed with clear separation.

Remember to order collection of bulky waste at the latest three working days before at www.naestved-affald.dk

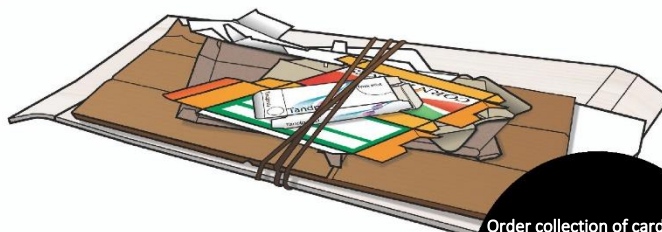
YOU CAN HAVE BULKY WASTE COLLECTED EVERY 14 DAYS

Has your fridge broken down or do you need a new sofa? Order collection of bulky waste at www.naestved-affald.dk under 'Min side' (My page) and forget about taking the waste to the recycling station yourself. The refuse collector will come by your address and collect it.

LARGE CARDBOARD ITEMS

IN THE BULKY WASTE SCHEME

SORTING GUIDE



Order collection of cardboard
every 14 days

Visit 'Min side' (My page) at
www.naestved-affald.dk.

YES PLEASE TO

- Large cardboard items (larger than an A4-size paper)
- Boxes
- Packaging cardboard (e.g. from internet shopping)
- Corrugated cardboard
- Shoe boxes

NO THANKS TO

- Plastic packaging
- Polystyrene
- Paper

Do you need space for cardboard in your paper container? Then we recommend that you use the bulky waste scheme. Here you can actually have the cardboard collected from your address every 14 days.

TIPS FOR SORTING

*When you put out cardboard for bulky waste collection, it must be **folded together, tied up and manageable** for the refuse collector. This is for the transport of the collected cardboard but also for the subsequent handling.*

You can bundle your cardboard with string or tape. Electric wiring or cables may not be used.

With many stops along the route, cardboard that is not tied together takes up a lot of space. This may lead to futile driving around as the refuse collector has to empty the lorry before he has room for more collections.

Remember to order collection of bulky waste at the latest three working days before at www.naestved-affald.dk

WHAT ARE LARGE CARDBOARD ITEMS?

To avoid your cardboard getting stuck in the paper container, we recommend that cardboard larger than A4-size paper is collected by the bulky waste scheme or be taken to the recycling station.

HAZARDOUS WASTE

MUST BE PLACED IN THE RED HAZARDOUS WASTE BOX

SORTING GUIDE



YES PLEASE TO

- Household batteries
- Ink and printer cartridges
- Electric bulbs
- Pesticides
- Chemical remnants
- Lighters
- Paint remnants
- Oil
- Weed killer
- Spray cans
- Nail polish and nail polish remover
- Small electronic items (e.g. bicycle lights, electric toothbrushes and mobile phones)

NO THANKS TO

- Fireworks and gunpowder
- Syringes, medicine remnants and packaging (must be handed over at the pharmacy)
- Weapons, knives and sharp items
- Cartridges and ammunition
- Larger batteries (e.g. car batteries and accumulators)
- Pressure bottles (e.g. gas cartridges for grill and gas burners)
- Radioactive waste
- Ceramic and shards of glass
- Spontaneous inflammable cloths

TIPS FOR SORTING

Large electronic items must go to bulky waste or be taken to the recycling station.

Car batteries and sharp items may not be placed in the red hazardous waste box. They must instead be taken to the recycling station.

Hazardous waste that may not be placed in the red hazardous waste box or that is too large for the box, must be taken to the recycling station.

Batteries and electric bulbs must be placed in each their maximum 4-litre size bag. Remember to tie a knot at the top of the bag.

These two types of waste may not be mixed with each other or other hazardous waste.

HAZARDOUS WASTE MUST BE PLACED IN THE RED HAZARDOUS WASTE BOX

As something new, you can have your hazardous waste collected at home. The waste must be placed in the supplied red hazardous waste box and you can order collection every 14 days.

Special rules apply for the collection of hazardous waste given that as the name indicates, it is hazardous and can create problems if it comes into contact with other waste, for instance.

YOUR RED HAZARDOUS WASTE BOX

The red hazardous waste box must be placed on your property boundary on the collection day



Hazardous waste must be placed in the red hazardous waste box.

There is a label on the lid of the box and you must fill it in with your address. If the address is not filled in, the refuse collector will not collect the box.

Collection of the red hazardous waste box

You have the option of having the box collected every 14 days. To have the box collected, you must place an order at www.naestved-affald.dk under 'Min side' (My page).

1. **Enter your address**
2. Select "Order collection of bulky waste and hazardous waste"
3. **Click on the next possible date**
4. Find the item "Exchange red hazardous waste box" in the menu with waste categories
5. **Accept the conditions for collection at the bottom of the page**
6. Fill in the order with your personal information

The box must be placed out on the property boundary at 7 am on the collection day. Place the box out in the evening before you have ordered collection at the earliest. You are responsible for the box and its contents until collection.

The hazardous waste box may weigh max. 4 kg including the box. The lid on the box must be closed. If you have hazardous waste that is larger than the hazardous waste box or which weighs more than 4 kg, this must be taken to the recycling station.

You can read more about the rules for the red hazardous waste box in the provided red folder or at www.naestved-affald.dk.

Thank you for looking out for our colleagues

When the red hazardous waste boxes have been collected, they are sent on for handling and processing. Here, the hazardous waste is sorted by hand so it can be handled correctly based on which type of waste it is. Some of the hazardous waste is incinerated in ovens where very high temperatures can be reached. This neutralises the toxins in the waste. Other waste is exposed to chemical processing so it can be reused in one form or another for other products.

To take the best possible care of our colleagues who receive your hazardous waste, remember to:

- Screw the lids on bottles, canisters and tubs tightly and place them upright in the environment box.
- **The waste must be responsibly packaged.** Use original packaging. If you do not have the original packaging, then place a label that clearly explains what type of waste it is.
- **Place batteries and electric bulbs in clear, max. 4-litre size bags.** Batteries in their own bag and electric bulbs in their own bag. Remember to tie a knot at the top of the bags.

TEXTILES

FOR BULKY WASTE

Even though it is already possible today to put out textiles for bulky waste collection, studies show that each household throws out 12-15 kg of textiles annually into the container for residual waste or takes it to the recycling station for small combustibles.

We will try to get the large amounts of textiles out of the container so even more textiles can be recycled. Textiles can actually be recycled in several ways than just direct reuse.

Perhaps you know about textiles for direct reuse from the containers that charity organisations collect clothing in. Here, clothing that can be reused, used again in the form it is delivered. For example, trousers are used again as trousers just by a new owner.

But textiles can actually be used for much more. For example, your stained or torn blouses can be used for insulation in walls, materials for new textiles or as filling for noise reduction in washing machines and cars.



Yes please to worn and ruined clothing

As something new, a special bag will be provided that can be used for textiles that will **not** go to direct reuse. For example, this could be:



- Ruined clothing
- Reusable clothing that you do not want to sell or donate
- Torn socks and underwear
- Bed linen and linen with stains and holes
- Ruined shoes, bags and belts
- Ruined soft toys
- Worn towels
- Stained and worn curtains and tablecloths
- Yarn remnants
- Cuttings

To have textiles collected, you just need to order bulky waste and place the bag out for collection. Remember to close the bag. When the refuse collector collects the bag, he will place a new bag for you which you can fill again with worn and ruined textiles. You can order collection of bulky waste and textiles at www.naestved-affald.dk under 'Min side' (My page).

GARDEN WASTE

ADDITIONAL SCHEME

SORTING GUIDE



YES PLEASE TO

- Leaves
- Branches
- Grass
- Plants

NO THANKS TO

- Tree roots and stumps
- Soil with grass
- Turf
- Garden soil
- Fallen fruit
- Street sweepings

TIPS FOR SORTING

You can have 6 units collected at a time. One unit corresponds to one bundle, one bag or approx. 100 litres in a container. Bundles must be one metre long at the most. Branches may be 10 cm thick at the most.

You must bundle garden waste, place it in paper sacks or place it in a container. Contact Team Affald if you want to use a container for garden waste.

The paper sacks may not be labelled with the words "Residual waste" or "Refuse collection" but must be paper sacks suitable for garden waste.

Garden waste will be collected once a month from and including April up to and including November.

HAVE GARDEN WASTE COLLECTED FROM YOUR ADDRESS

You can register for the garden waste scheme at www.naestved-affald.dk under 'Min side' (My page) or by contacting Næstved Municipality on telephone 5588 5588.

WASTE ABC

YOUR HELP FOR SORTING

It must be easy to sort waste but sometimes you can be in doubt about which container the waste has to go in. For example, where should I place my pizza tray? And where may I place the old piano for bulky waste collection?

At www.naestved-affald.dk you can find our Waste ABC with hundreds of search words. Just enter a word here and you will see where the waste has to be placed.

We constantly expand our ABC with new search words so therefore you are more than welcome to let us know if there are waste types or words you cannot find.



QUESTIONS AND ANSWERS

How do I contact Team Affald about questions?

You have the option of using our self-service solution at www.naestved-affald.dk under 'Min side' (My page).

Should there be a problem you cannot find help for, you are welcome to contact us via email affald@naestved.dk, on Facebook under 'Sammen ta'r vi skraldet' (Lets take out the refuse together) or call 5588 5588.

How often will the recycling containers be emptied?

Your recycling containers with plastic/food and beverage cartons as well as paper/small cardboard items will be emptied every 14 days. The recycling containers with metal and glass will be emptied every 8 weeks.

How does the start-up with the first collection function?

The new waste sorting scheme will first become effective on 1 July 2021. Therefore, you must continue with your old waste sorting until then - also even though your recycling container has been given new pictograms.

Depending on the start-up, there may possibly be a change the first time the containers are emptied. This is because waste from the old and new waste sorting may not be mixed together. When the waste is to be processed and recycled, this may actually have an influence on the further possibilities for the waste.

Where do I find the rules for container areas and access route?

You can read about the rules for the area for your containers as well as your access route on page 6 or at www.naestved-affald.dk. Here you can find a folder that can be downloaded.

What do I do if my container area is not in order for the new waste sorting scheme?

You must ensure that the area where your containers are placed for collection comply with the requirements in relation to container area and access route.

If you need to extend your container area so there is more room, the containers can be stored in another place until the collection day. However, it is important that on collection day the containers are placed so the refuse collector can collect them without violating the rules.

Can I receive a text message with information about the collection days?

At www.naestved-affald.dk you can register for our free text message service and be notified regarding your collection days. Remember to cancel the service if you move to another address or change your phone number.

Green bags for food waste

Green bags for food waste will not be provided. You must instead use plastic bags just like the ones you use for residual waste.

Will it cost more when the new waste sorting scheme starts?

No. You will not be charged again for refuse collection when the new scheme becomes effective. Refuse collection is paid once annually unless you make changes yourself in the form of an extra container for residual waste.

QUESTIONS AND ANSWERS

TYPES OF WASTE

Why do we recycle food waste?

Food waste can be used for biogas and compost. The collected food waste will be transported to an incineration plant where the bags will be cut open and sorted together with other incorrectly sorted waste. The food waste is then made into a liquid mass called pulp. At a biogas plant, the pulp is converted to biogas which can be used for heating products, for example. Once the mass is degassed, the food waste becomes compost which is used in agriculture.

Why must plastic and food and beverage cartons be mixed?

When the container with plastic and food and beverage cartons are emptied by the refuse collector, the waste is sent on for processing. Both types of waste can be handled by the same plant and, therefore, it is possible for both types of waste to be mixed together in the same section in your container.

Why do we recycle plastic?

About 2 kg of oil is used to produce one kilo of new plastic. When we recycle plastic, we help to keep the consumption of oil down. The collected plastic is pressed into large bales so it takes up as little space as possible, and is transported to a plant where it is sorted according to type and colour. The plastic is then shredded which means that the plastic takes up less space and has new recycling possibilities as granules, for example. This can be used for the production of new plastic products, e.g. new refuse bins, garden furniture and plastic bags.

Why do we recycle food and beverage cartons?

Your used food and beverage cartons are so-called composite waste, which means that it is a combination of different types of waste. The cartons actually consist of both plastic and paper. After the cartons have been collected, they are transported to a plant where they are washed. The plastic foil is then separated from the paper fibres so both types of waste can be used again for, e.g. new plastic and paper products.

Why do we recycle paper?

Paper and small cardboard items can be recycled into new paper products. The collected paper and cardboard is transported to a plant where it is sorted according to quality. The paper is then dissolved in water and the mass is used to make new paper. In this way we save energy and avoid felling more trees than absolutely necessary. Every time paper is recycled, the quality becomes slightly poorer. The paper begins as printing paper and ends up finally as egg trays.

Why do we recycle glass?

When glass is recycled, we save both energy and resources. After collection, the glass is sorted at the company, Reiling Glasrecycling in the Port of Naestved after which it is transported to Ardagh Glass Holmegaard in Fensmark. Here, the glass is recycled locally into new pickle jars and wine bottles.

Where can I find more information about waste sorting and the new scheme?

If you want to read more about the waste sorting scheme, the new types of waste and sorting, you can visit www.naestved-affald.dk or our Facebook page under 'Sammen ta'r vi skraldet' (Lets take out the refuse together).



**Thank you for
sorting your waste**